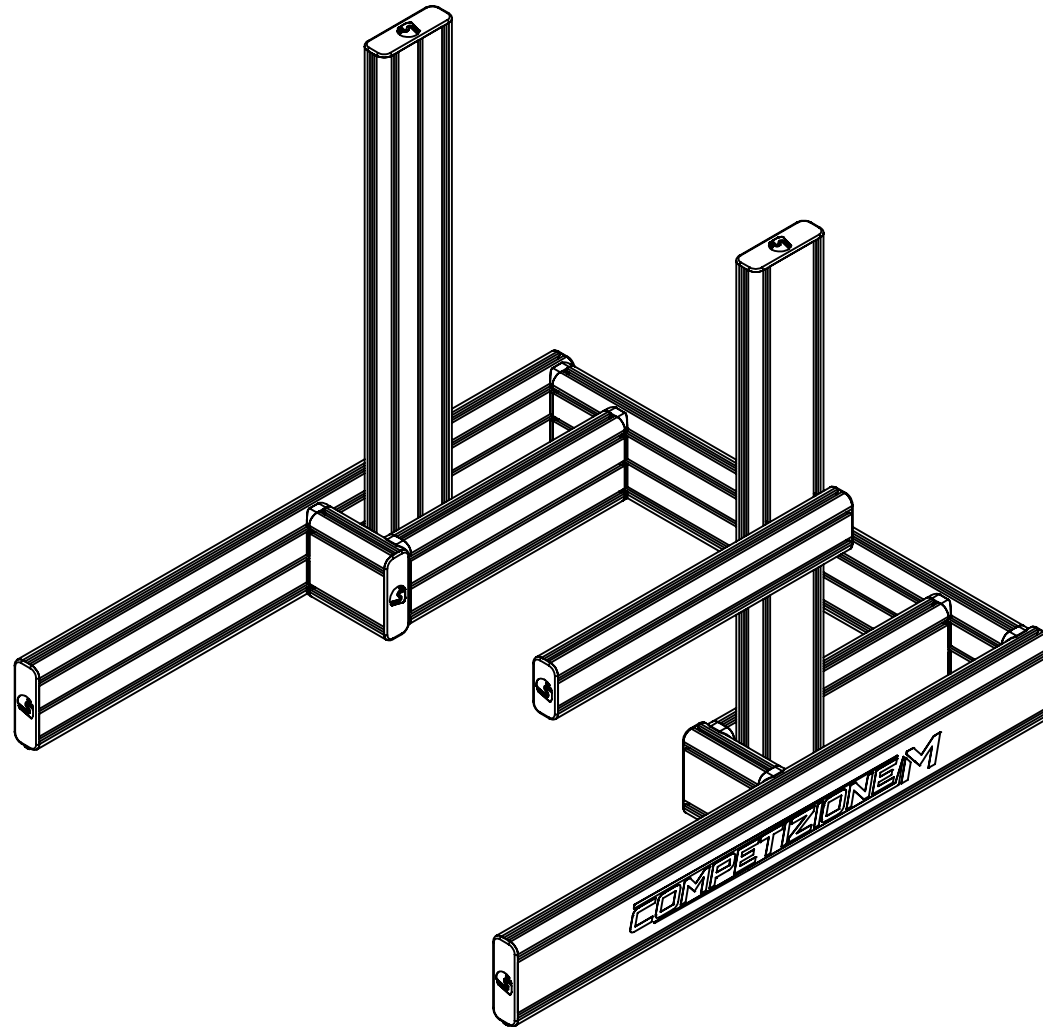


MANUALE DI ISTRUZIONI - INSTRUCTION MANUAL



COMPETIZIONE M

PRIMA DI PARTIRE:

ITA- Grazie per aver acquistato questo prodotto Sim Factory!
Nelle pagine seguenti troverete istruzioni dettagliate sull'assemblaggio.
Ciò richiede degli strumenti semplici e un po' del vostro tempo.

A seconda del prodotto scelto l'assemblaggio può richiedere da qualche minuto a molte ore, ma adorerete ogni minuto speso per dar forma al vostro prodotto Sim Factory.

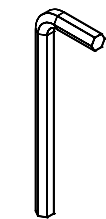
BEFORE YOU START:

ENG- Thank you for purchasing this Sim Factory product!
On the following pages, you will find detailed instructions on assembly.
This requires only a set of simple tools and some of your time.

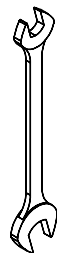
Depending on the product chosen assembly can take from a few minutes to many hours, but you will love every minute spent on shaping your Sim Factory product.

ITA- Strumenti necessari:

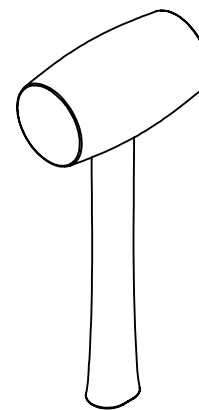
ENG- Tools needed:



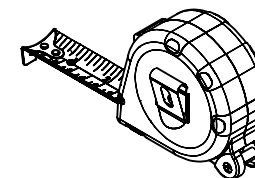
4mm
5mm
6mm



13mm
17mm



martello in gomma
rubber hammer

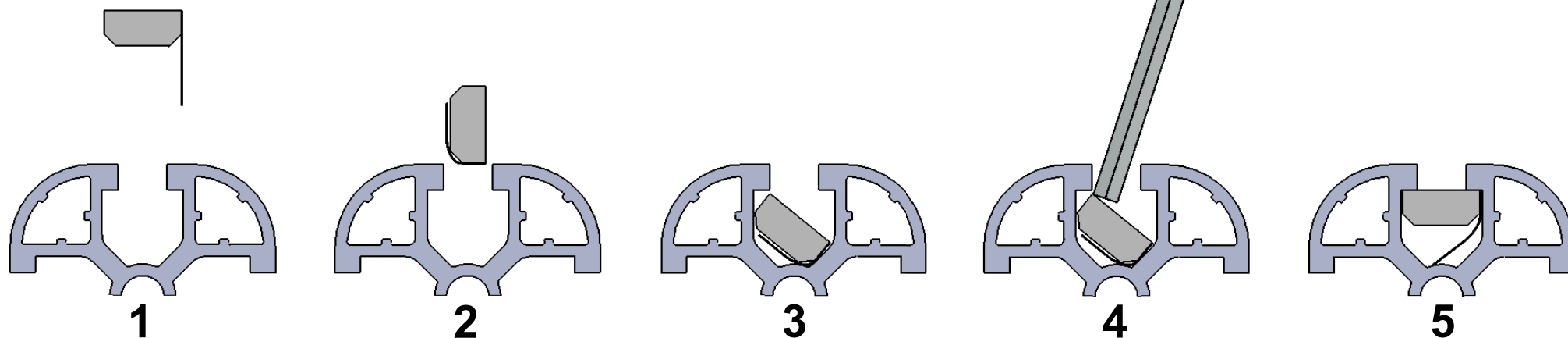
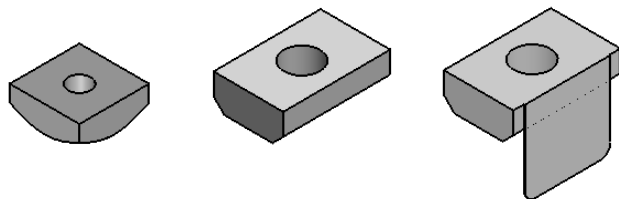


Inserimento cursori:

ITA- In questo diagramma potete vedere come inserire un cursore direttamente nella cava. Potete anche usare una delle chiavi esagonali più piccole per aiutarvi a muovere il cursore in posizione.

Inserting Slot-Nuts:

ENG- In this diagram, you can see how to insert a Slot-Nut directly into the slot from the side. You can also use one of your smaller Hex wrenches to help wiggle the Slot-Nut in place.

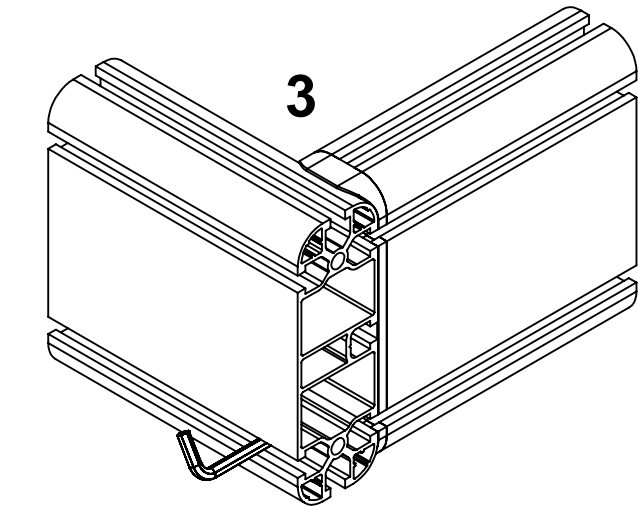
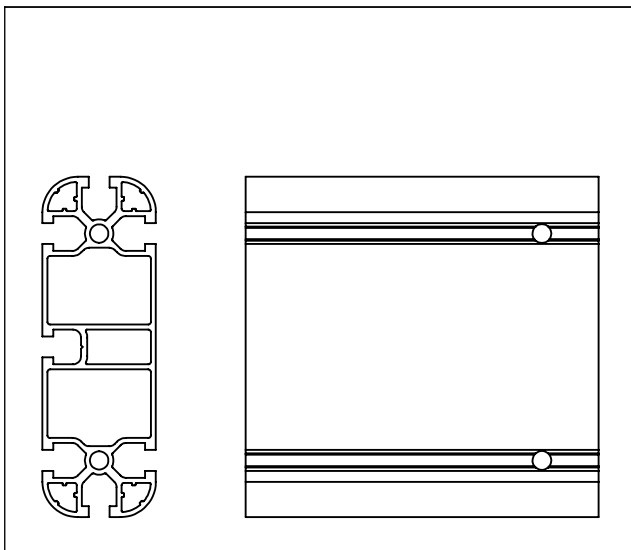
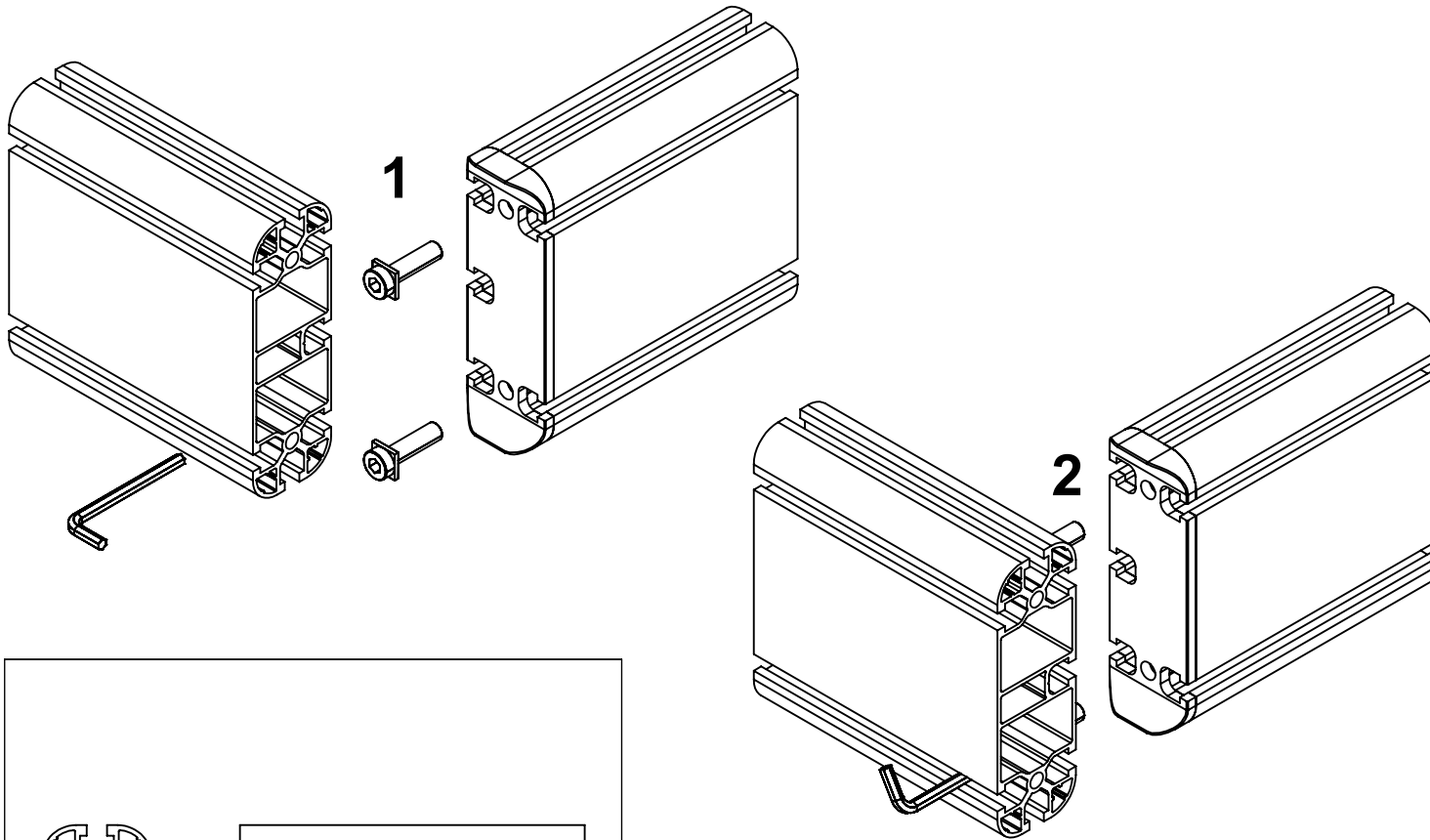


Foro passaggio chiave:

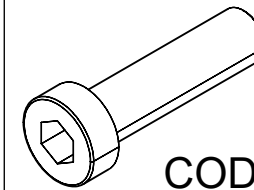
ITA- In questo diagramma potete vedere come eseguire il fissaggio correttamente.

Hex wrenches passage hole:

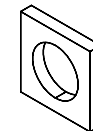
ENG- In this diagram, you can see how to fixing correctly.



ITA- Vite a testa ribassata
ENG- Low head screw



COD.CVITB0000023



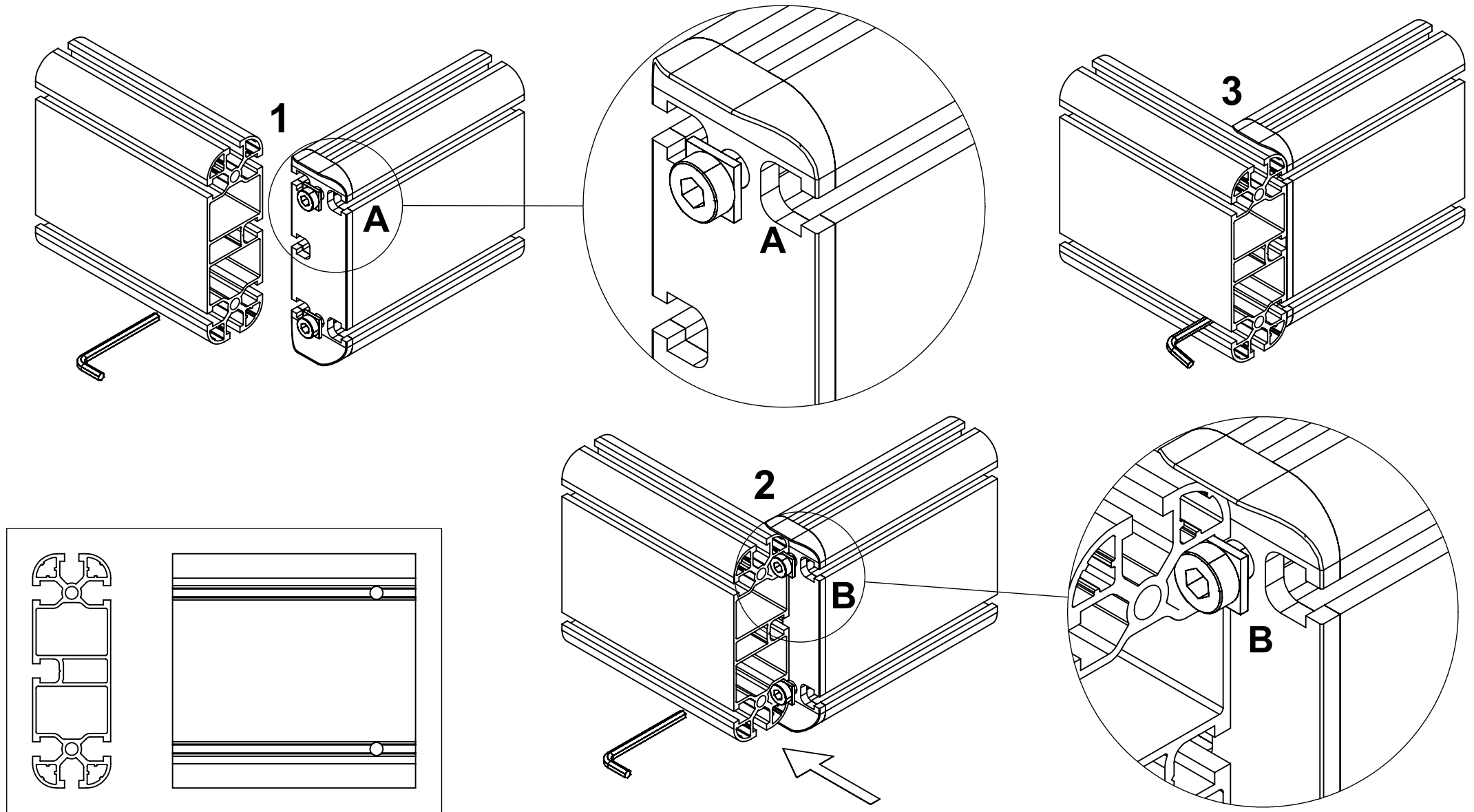
COD.CROY0000013

Foro passaggio chiave:

ITA- In questo diagramma potete vedere un altro modo per eseguire il fissaggio.

Hex wrenches passage hole:

ENG- In this diagram, you can see another way to do the fixing.

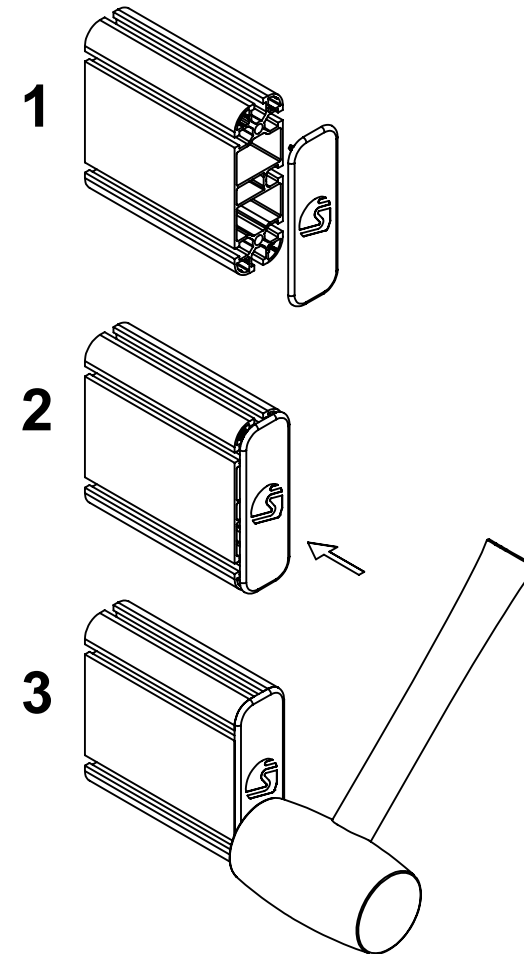
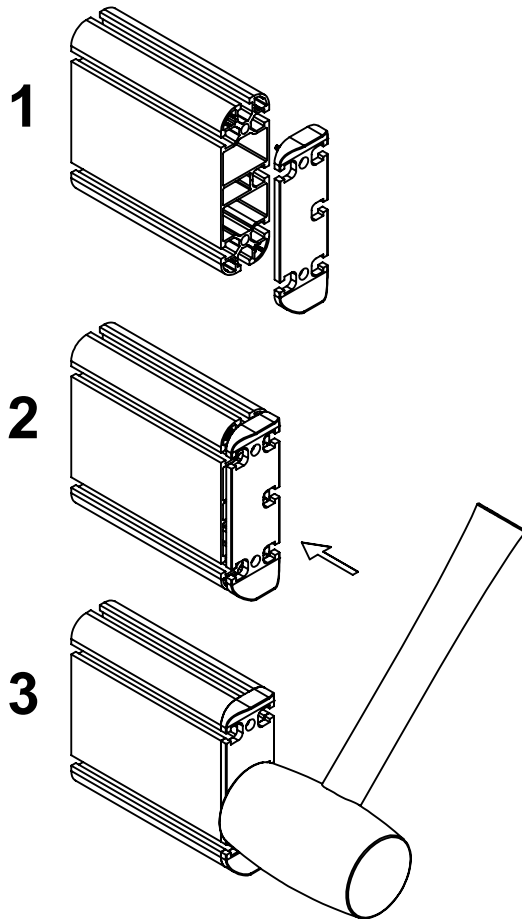


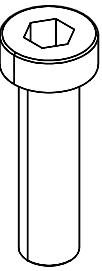
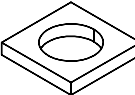
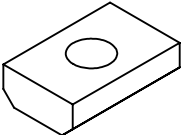
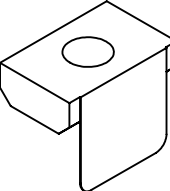
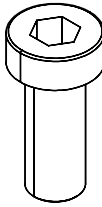
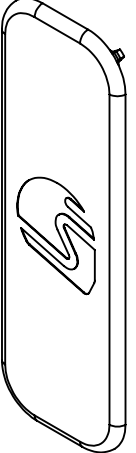
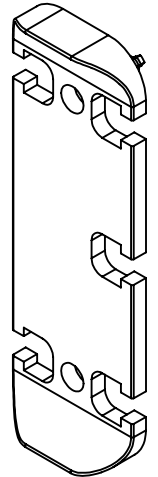
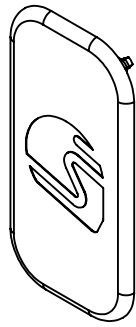
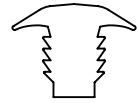
Inserimento tappi e giunti:

ITA- In questo diagramma potete vedere come inserire un tappo o un giunto. Potete anche usare il martello in gomma per incastrare il tappo o il giunto. Colpite la parte piatta del giunto, non occorre molta forza.

Inserting caps and joints:

ENG- In this diagram, you can see how to insert a cup or joint. You can also use the rubber hammer to tap in the cap or joint. Hit the flat part of the joint, it doesn't take much force.



<p>DIN 7984 M8X30 COD.CVITB0000023 16 PZ</p> <p>SA.01.COM.02</p>	<p>13X13X2 COD.CROY0000013 28 PZ</p> <p>SA.01.COM.02</p>	<p>M8 13X20X6 COD.DDDCU0000037 8 PZ</p> <p>SA.01.COM.02</p>	<p>M8 13X20X6 COD.DDDCU0000038 4 PZ</p> <p>SA.01.COM.02</p>	<p>DIN 7984 M8X20 COD.CVITB0000021 12 PZ</p> <p>SA.01.COM.02</p>	
					
<p>TI.15.45.135.N 10 PZ</p> <p>SA.02.COM.02</p>	<p>GO.14.45.135.N 8 PZ</p> <p>SA.02.COM.02</p>	<p>TI.15.45.090.N 2 PZ</p> <p>SA.02.COM.02</p>	<p>DGUCA0000011 L 1000mm 2 PZ</p>		
					

ITA- COSA C'È NELLA SCATOLA
ENG- WHAT'S IN THE BOX

DIM: 150 X 25 X H 25
WEIGHT: 24 KG

COD: KI.COM.02.NO

PR.135.N.L1000.FO 2PZ

PR.135.N.L900.FO 2PZ

PR.135.N.L840.FF 1PZ

PR.135.N.L400.FI 2PZ

PR.135.N.L140.FF 2PZ

PR.090.N.L550.FO 1PZ

DGUCA0000011 L 1000mm 2PZ

SA.01.COM.02 :

COD.CVITB0000023 16PZ

COD.CVITB0000021 12PZ

COD.CROY0000013 28PZ

COD.DDDCU0000037 8PZ

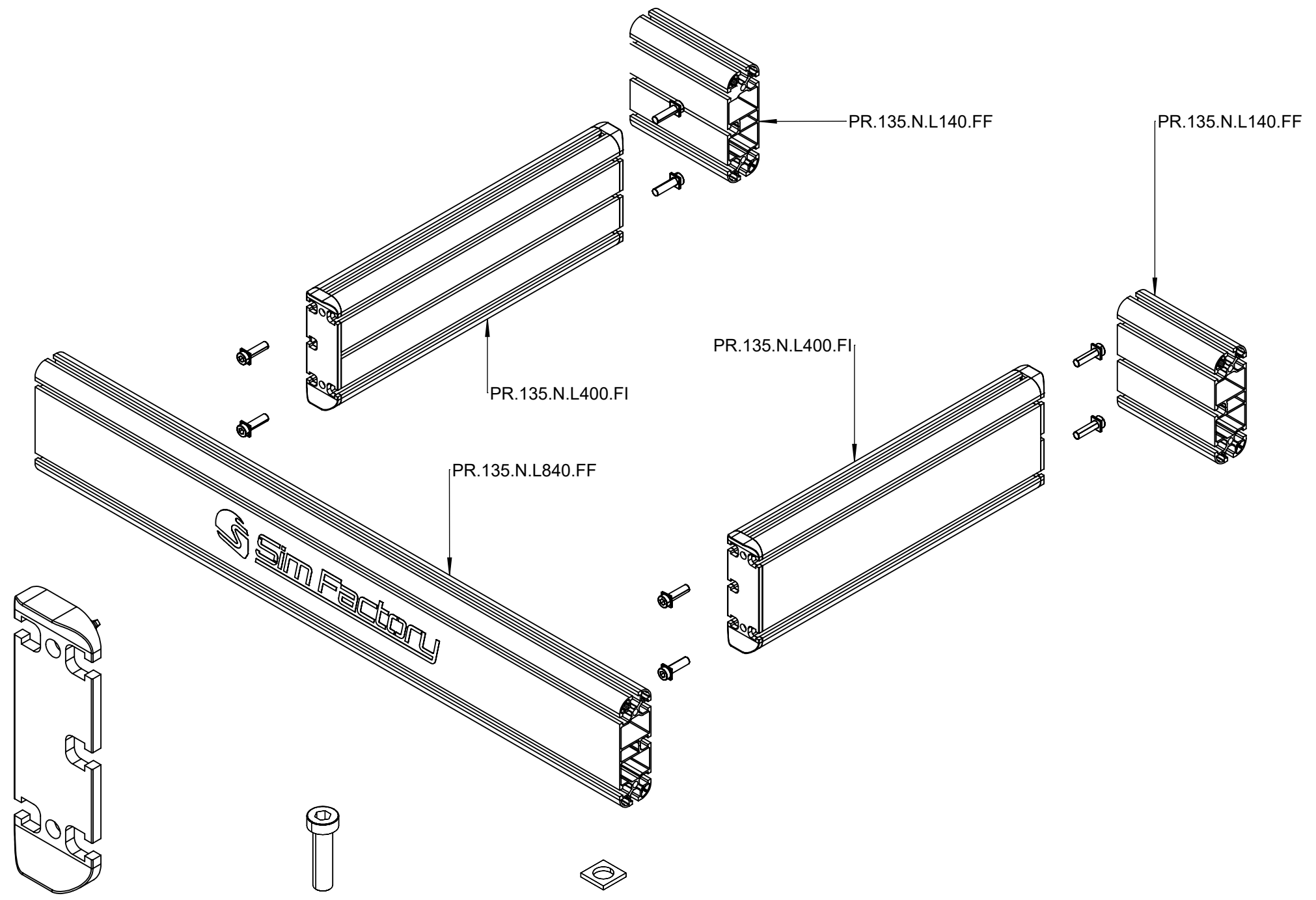
COD.DDDCU0000038 4PZ

SA.02.COM.02 :

TI.15.45.135.N 10PZ

GO.14.45.135.N 8PZ

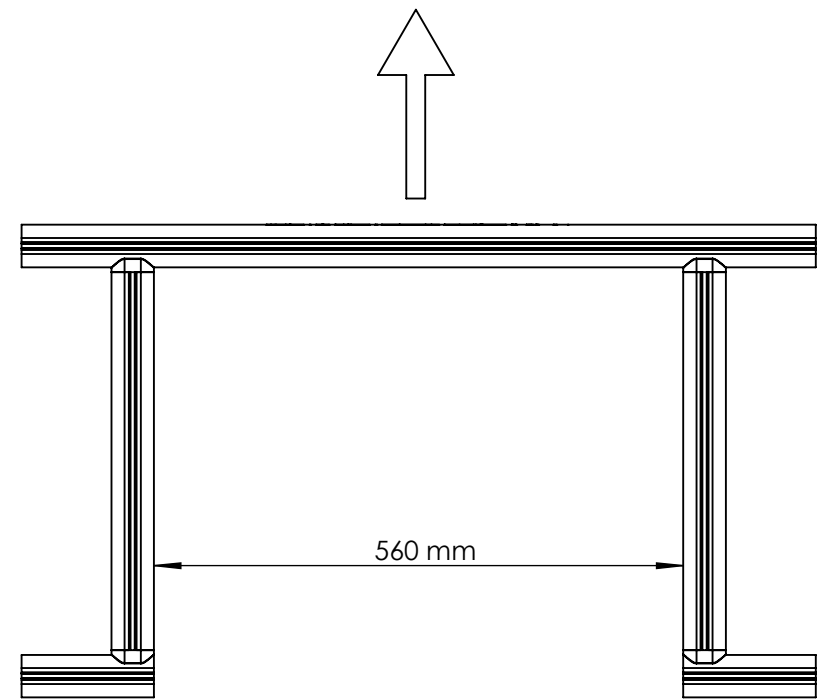
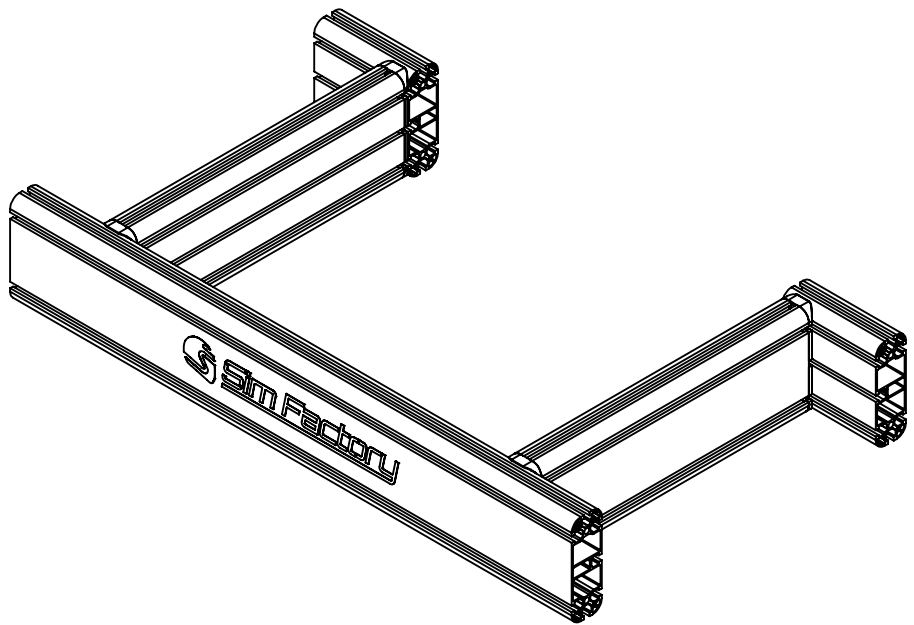
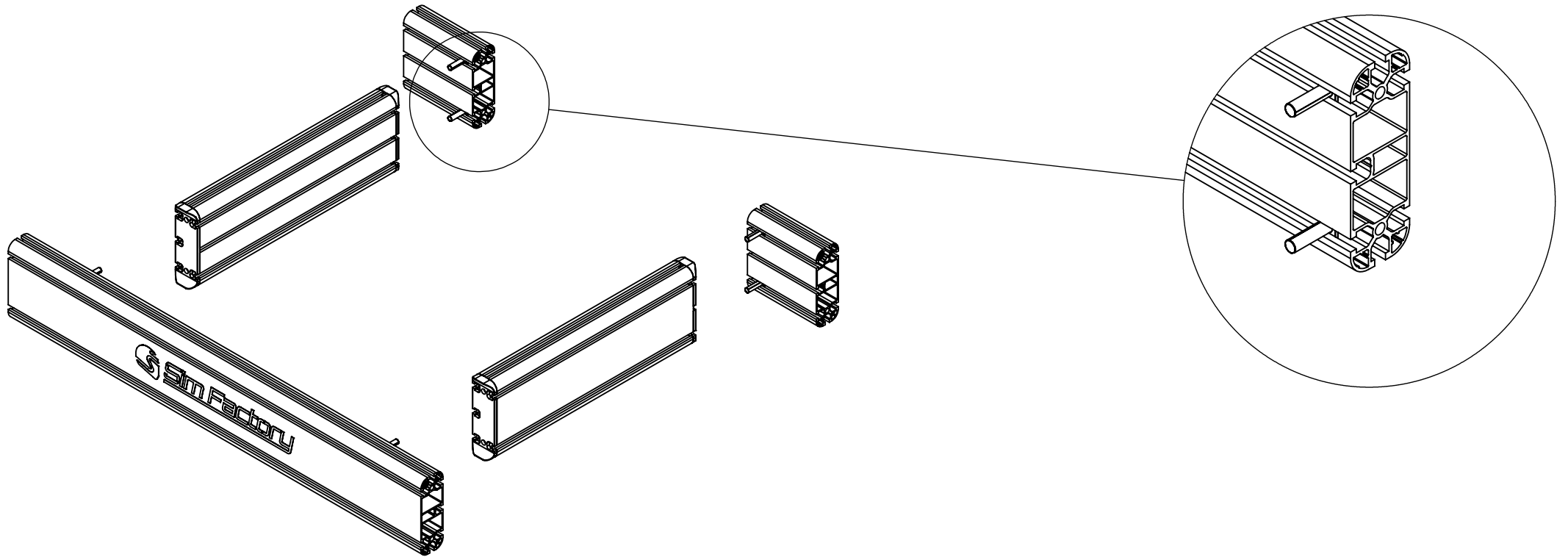
TI.15.45.090.N 2PZ

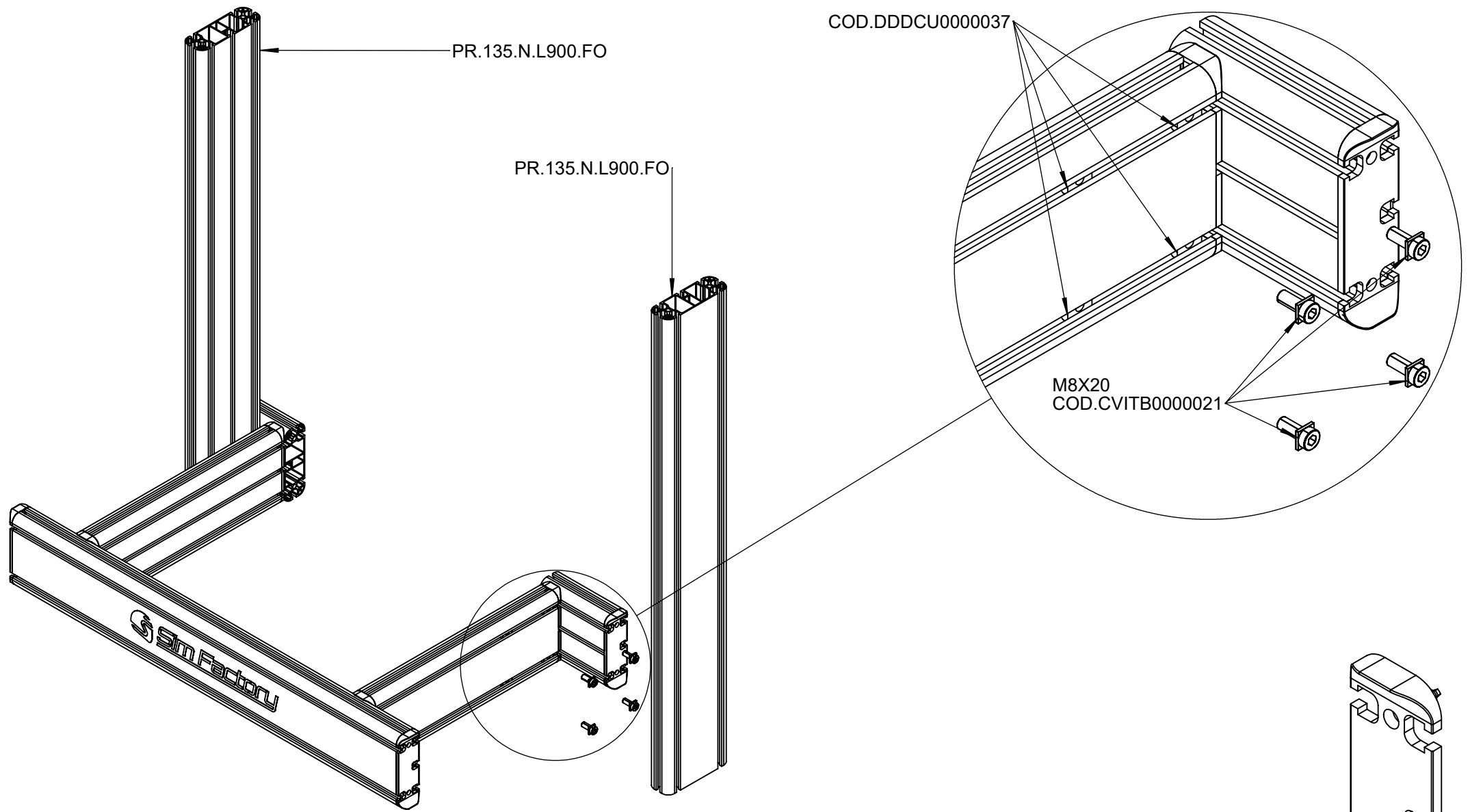


4X
GO.14.45.135.N

8X
COD.CVITB000023

8X
COD.CROY000013





PR.135.N.L900.FO

COD.DDDCU0000037

PR.135.N.L900.FO

M8X20
COD.CVITB0000021

SIM Factory



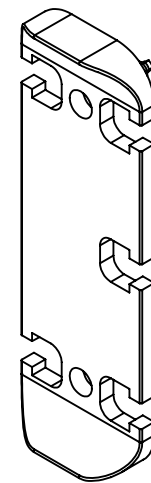
8X
COD.DDDCU0000037



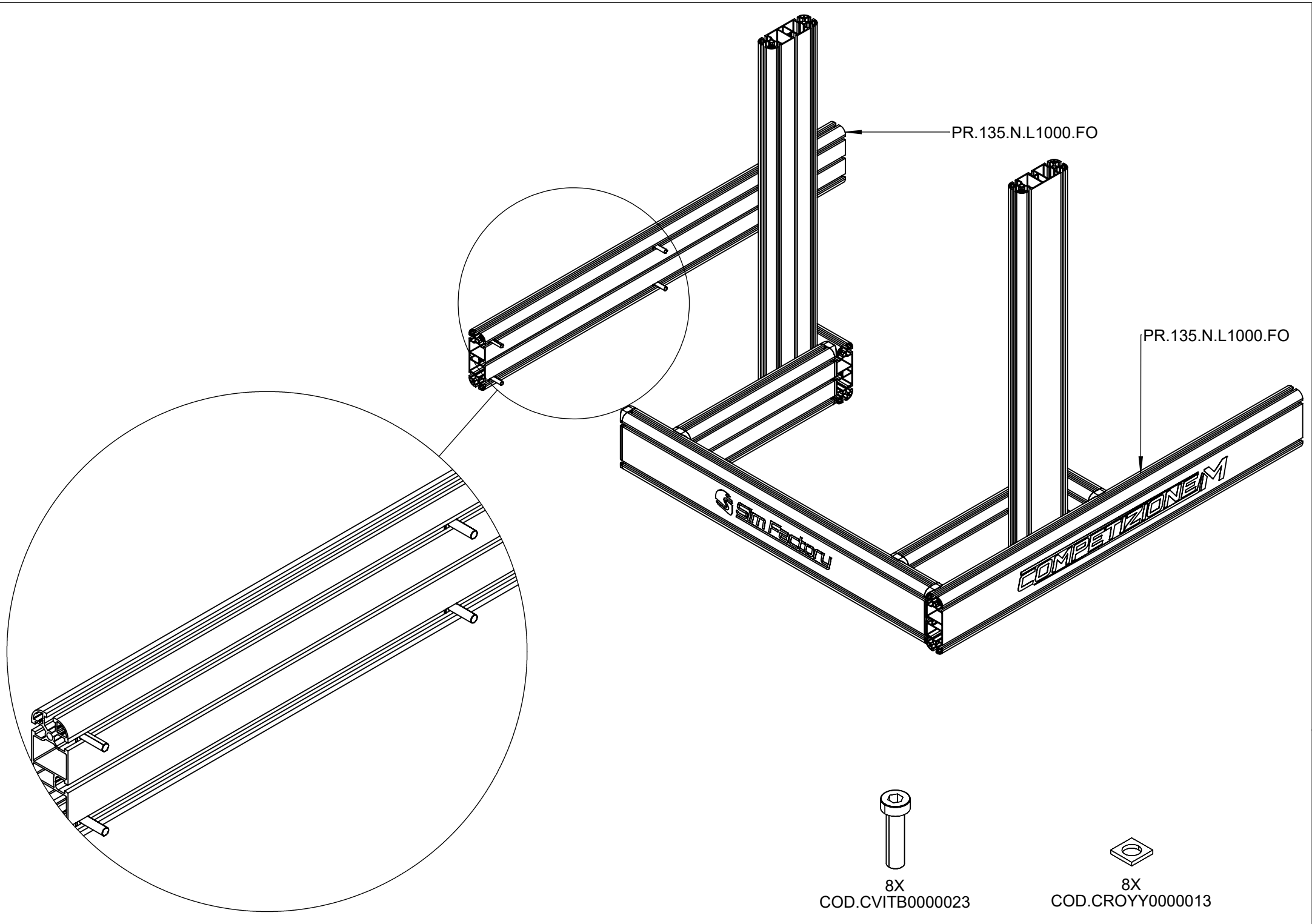
8X
COD.CROY0000013



8X
M8X20 COD.CVITB0000021



4X
GO.14.45.135.N

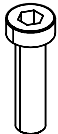


PR.135.N.L1000.FO

PR.135.N.L1000.FO

Sim Factory

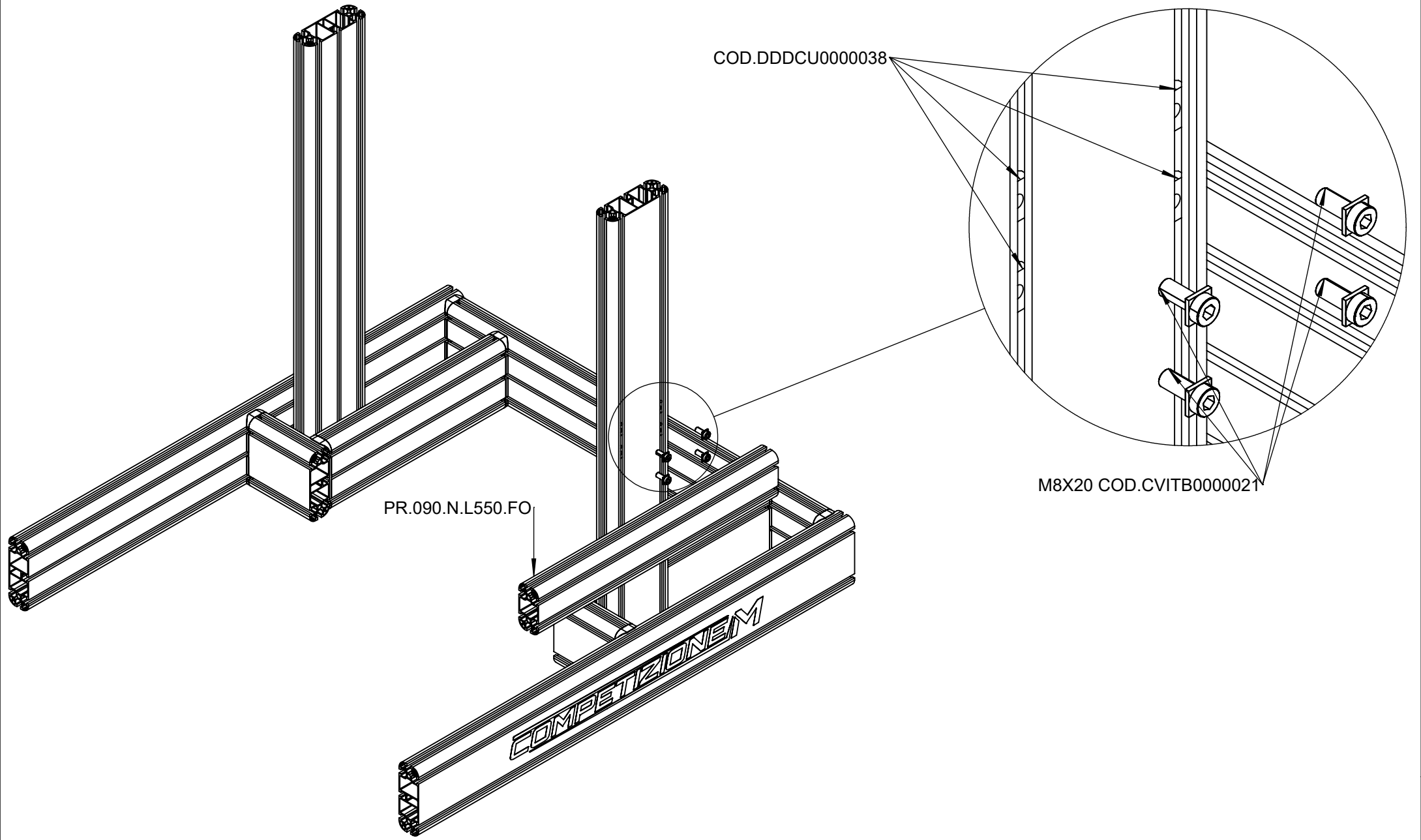
COMPETIZIONE



8X
COD.CVITB0000023



8X
COD.CROY0000013



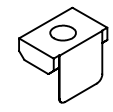
PR.090.N.L550.FO

COD.DDDCU0000038

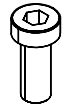
M8X20 COD.CVITB0000021



4X
COD.CROY0000013



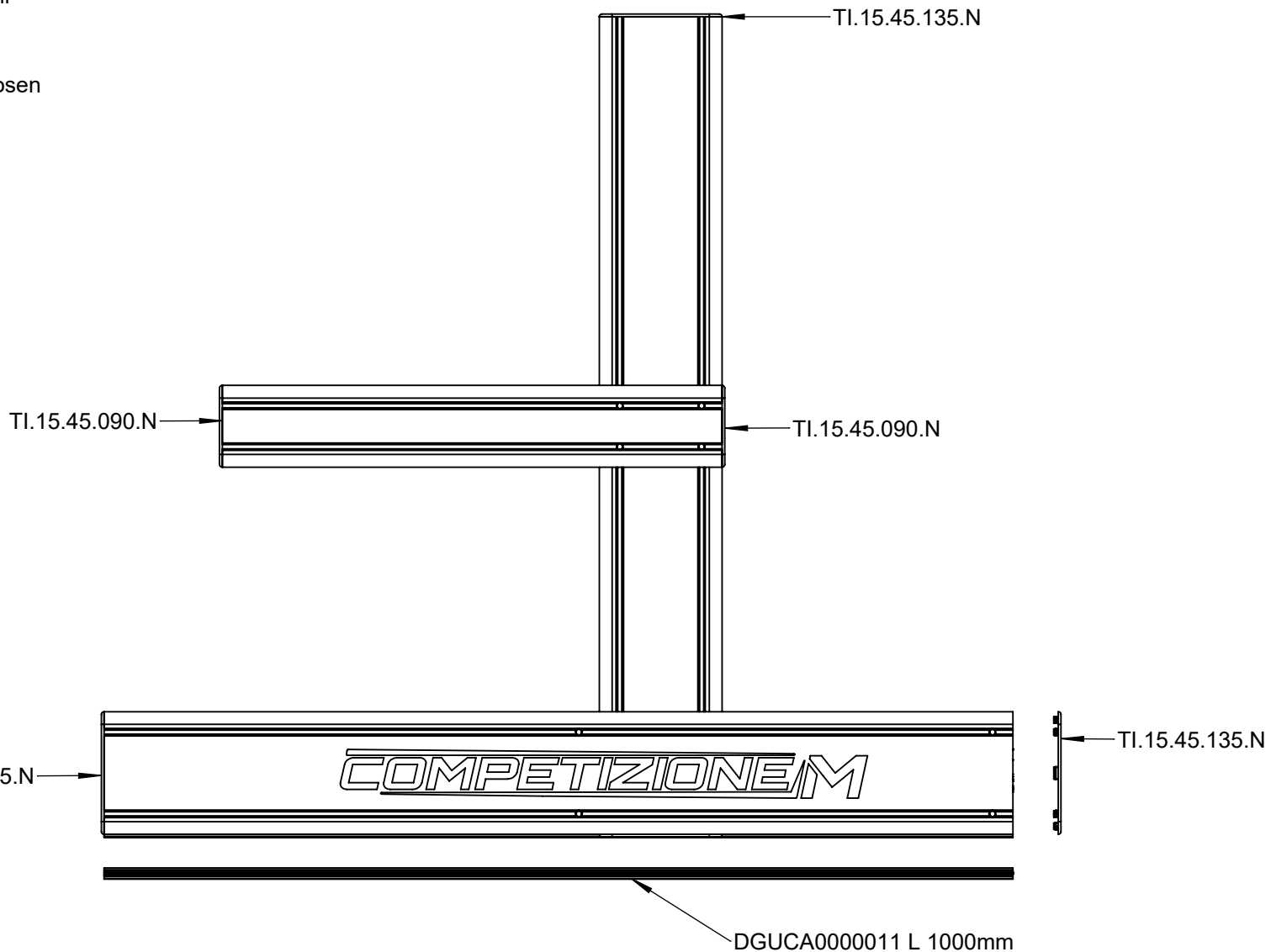
4X
COD.DDDCU0000038



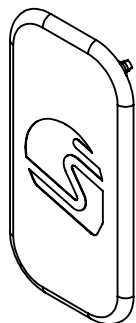
4X
M8X20 COD.CVITB0000021

ITA- Inserite DGUCA0000011 solo se non si è scelto il kit MOUNTING BRACKETS STABILIZING o il kit MOUNTING BRACKETS WHEELS.

ENG- Insert DGUCA0000011 only if you have not chosen the MOUNTING BRACKETS STABILIZING kit or the MOUNTING BRACKETS WHEELS kit.



10X
TI.15.45.135.N



2X
TI.15.45.090.N



2X
DGUCA0000011 L 1000mm

