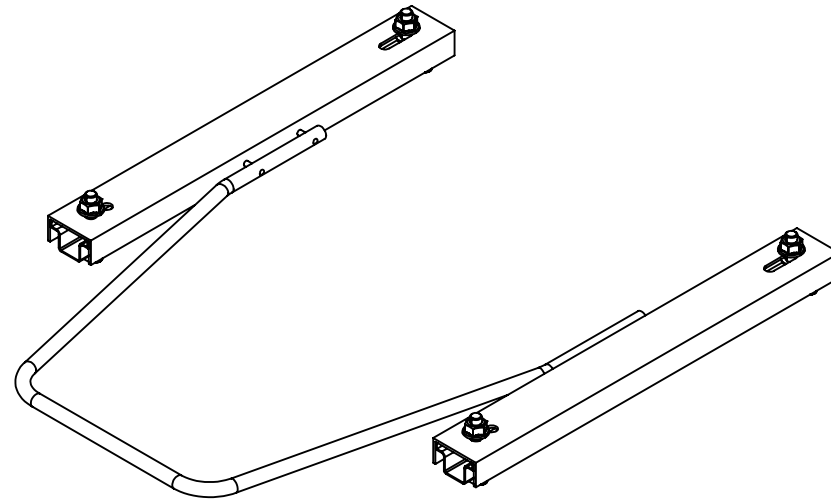




MANUALE DI ISTRUZIONI - INSTRUCTION MANUAL



UNIVERSAL SEAT SLIDER

PRIMA DI PARTIRE:

ITA- Grazie per aver acquistato questo prodotto Sim Factory!
Nelle pagine seguenti troverete istruzioni dettagliate sull'assemblaggio.
Ciò richiede degli strumenti semplici e un po' del vostro tempo.

A seconda del prodotto scelto l'assemblaggio può richiedere da qualche minuto a molte ore, ma adorerete ogni minuto speso per dar forma al vostro prodotto Sim Factory.

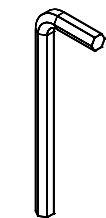
BEFORE YOU START:

ENG- Thank you for purchasing this Sim Factory product!
On the following pages, you will find detailed instructions on assembly.
This requires only a set of simple tools and some of your time.

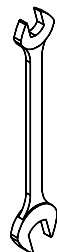
Depending on the product chosen assembly can take from a few minutes to many hours, but you will love every minute spent on shaping your Sim Factory product.

ITA- Strumenti necessari:

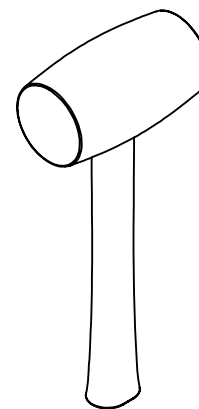
ENG- Tools needed:



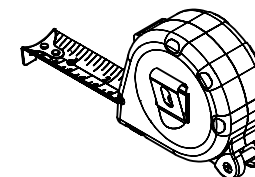
4mm
5mm
6mm



13mm
17mm



martello in gomma
rubber hammer

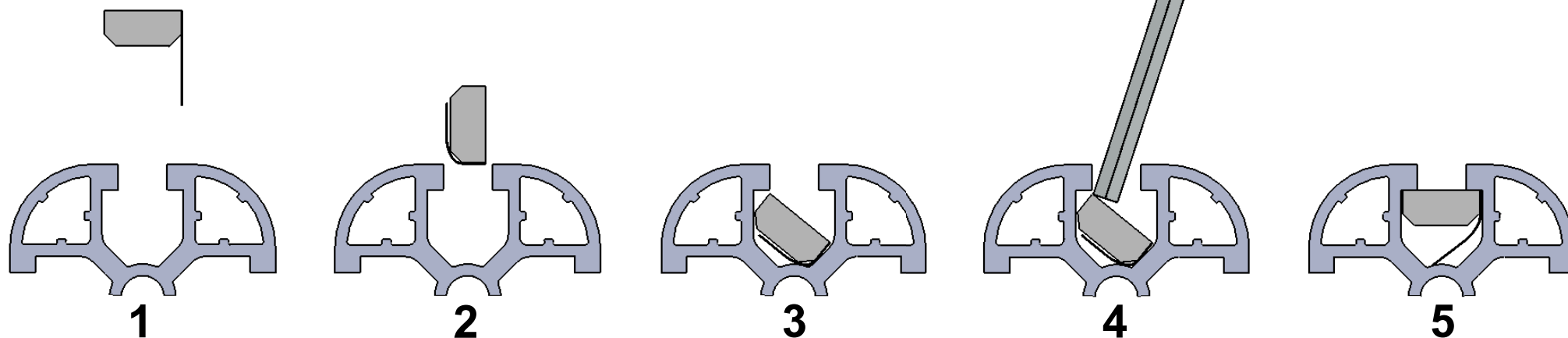
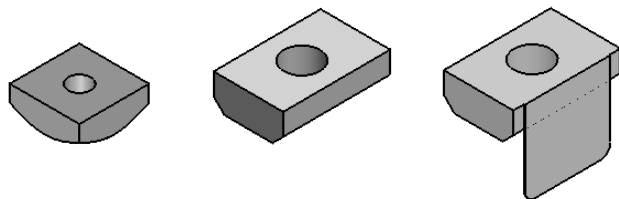


Inserimento cursori:

ITA- In questo diagramma potete vedere come inserire un cursore direttamente nella cava. Potete anche usare una delle chiavi esagonali più piccole per aiutarvi a muovere il cursore in posizione.

Inserting Slot-Nuts:

ENG- In this diagram, you can see how to insert a Slot-Nut directly into the slot from the side. You can also use one of your smaller Hex wrenches to help wiggle the Slot-Nut in place.

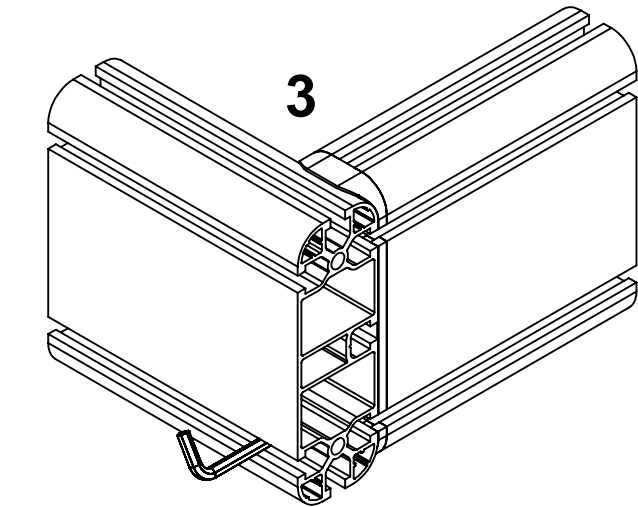
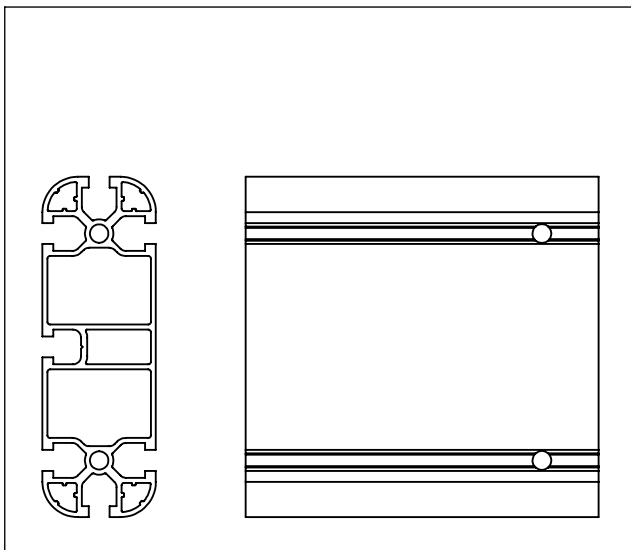
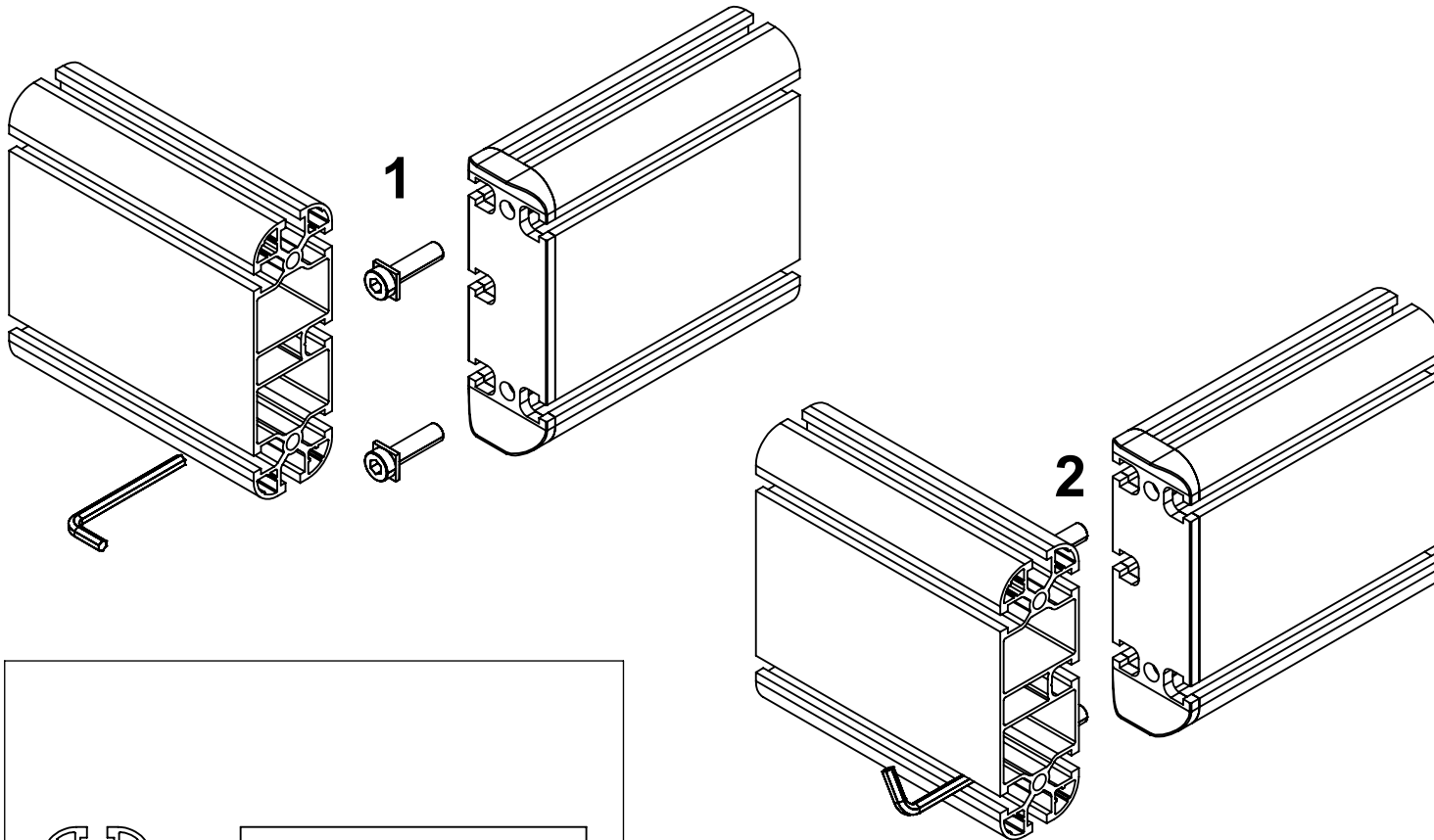


Foro passaggio chiave:

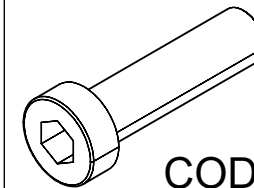
ITA- In questo diagramma potete vedere come eseguire il fissaggio correttamente.

Hex wrenches passage hole:

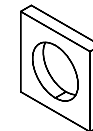
ENG- In this diagram, you can see how to fixing correctly.



ITA- Vite a testa ribassata
ENG- Low head screw



COD.CVITB0000023



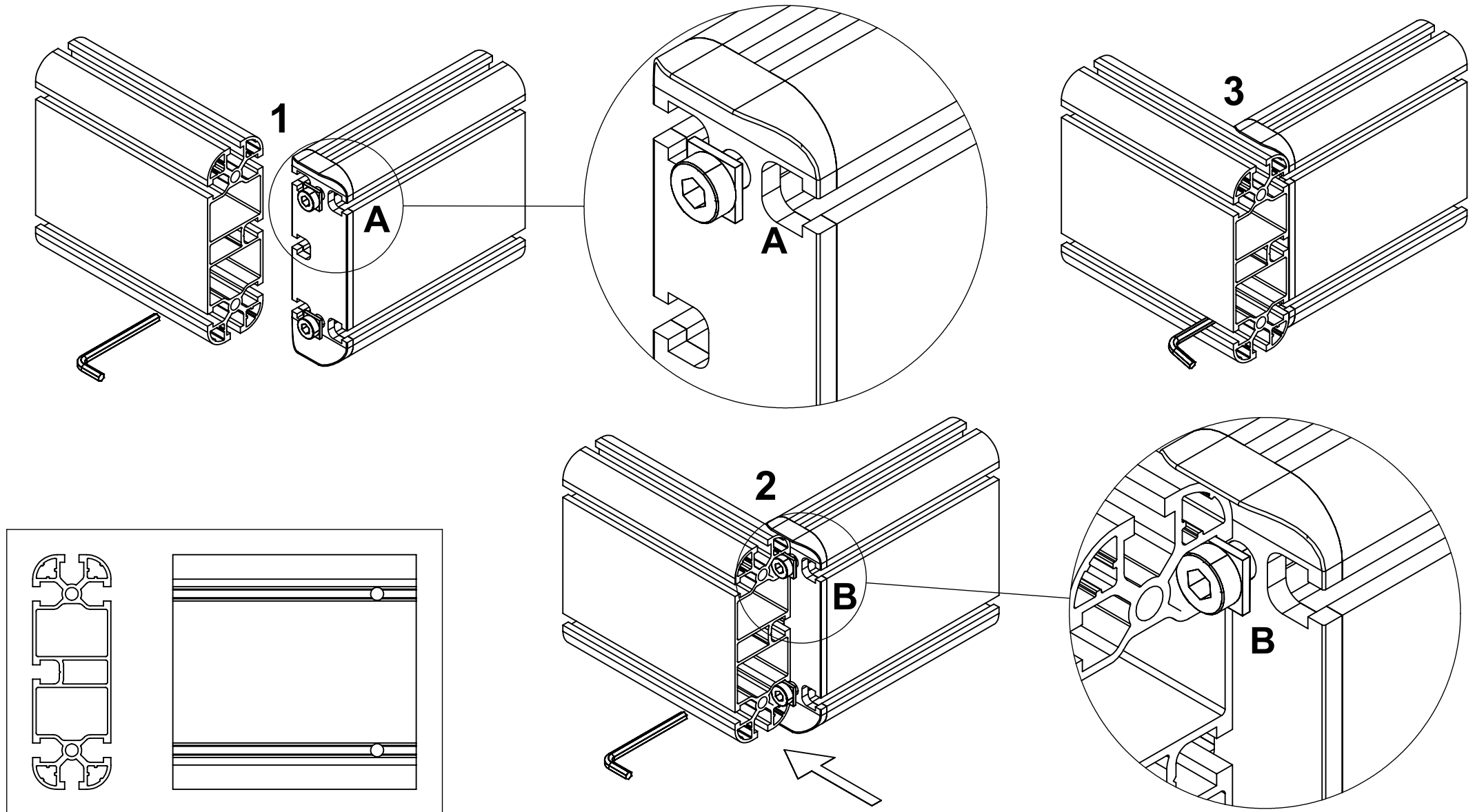
COD.CROY0000013

Foro passaggio chiave:

ITA- In questo diagramma potete vedere un altro modo per eseguire il fissaggio.

Hex wrenches passage hole:

ENG- In this diagram, you can see another way to do the fixing.

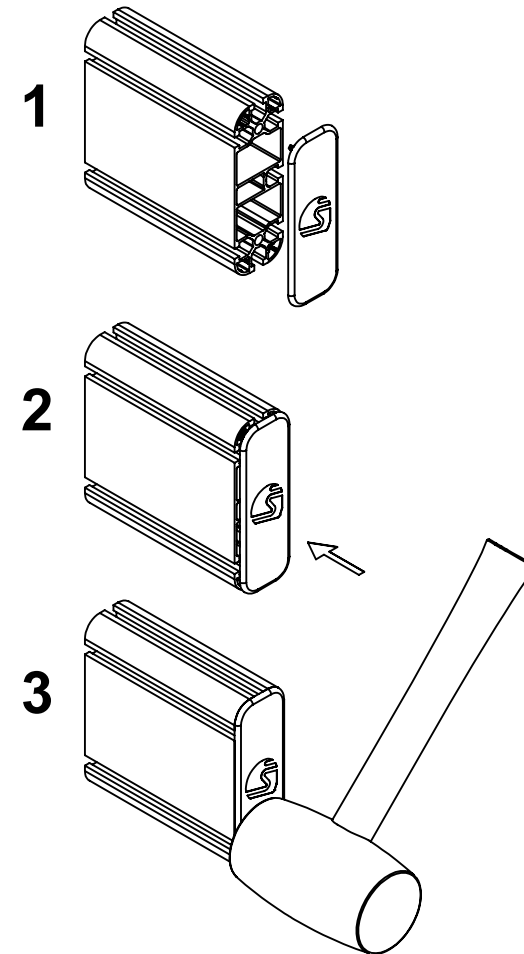
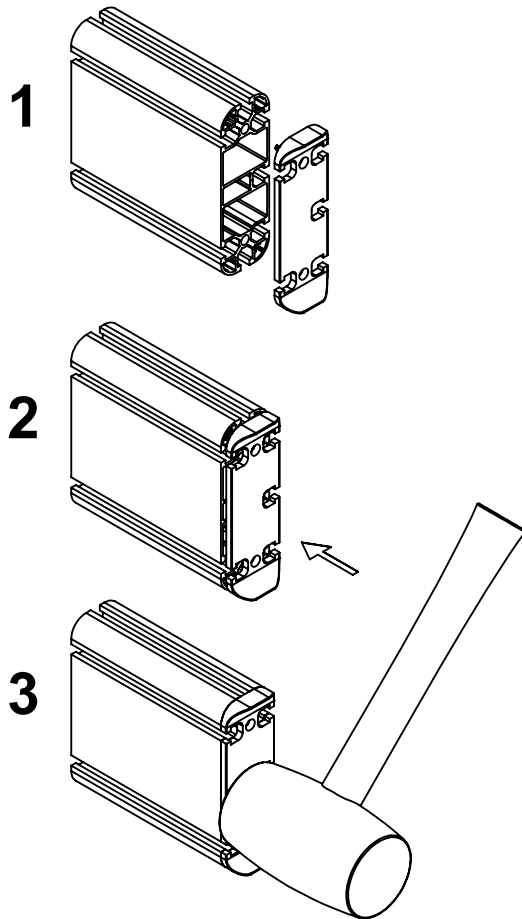


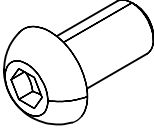
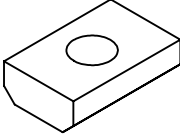
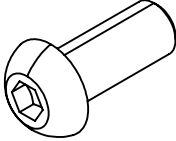
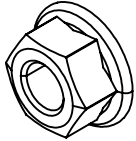
Inserimento tappi e giunti:

ITA- In questo diagramma potete vedere come inserire un tappo o un giunto. Potete anche usare il martello in gomma per incastrare il tappo o il giunto. Colpite la parte piatta del giunto, non occorre molta forza.

Inserting caps and joints:

ENG- In this diagram, you can see how to insert a cup or joint. You can also use the rubber hammer to tap in the cap or joint. Hit the flat part of the joint, it doesn't take much force.



<p>ISO 7380 M8X16 4 PZ</p> <p>SA.01.USL.01</p>	<p>M8 13X20X6 COD.DDDCU0000037 4 PZ</p> <p>SA.01.USL.01</p>	<p>ISO 7380 M8X20 4 PZ</p> <p>SA.01.USL.01</p>	<p>DIN 6923 M8 4 PZ</p> <p>SA.01.USL.01</p>		
					

ITA- COSA C'È NELLA SCATOLA
ENG- WHAT'S IN THE BOX

DIM:
WEIGHT: 2 KG
COD: KI.USL.01.N

UNIVERSAL SEAT SLIDER

1PZ

SA.01.USL.01 :

ISO 7380 M8X16

4PZ

COD.DDDCU0000037

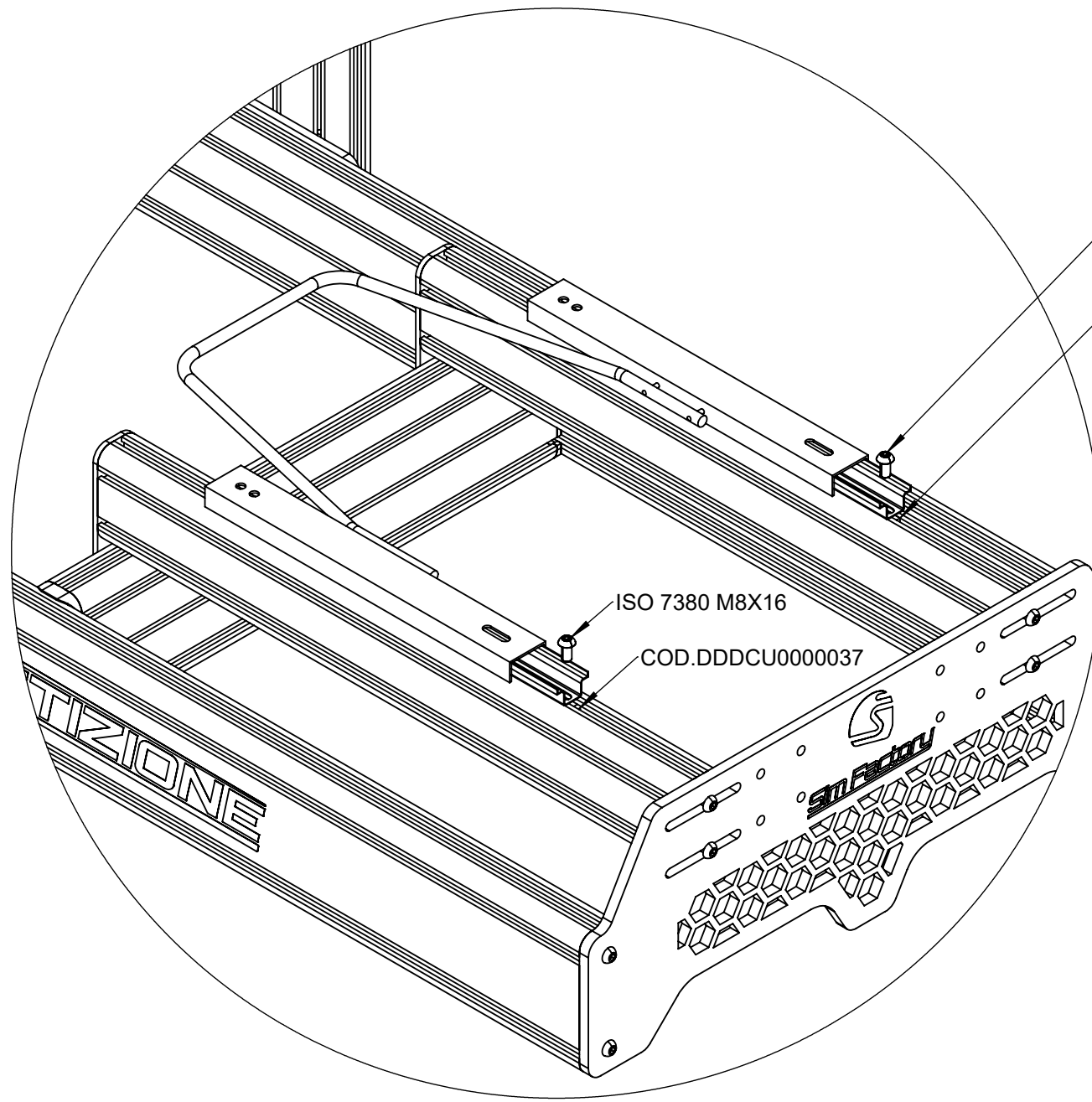
4PZ

ISO 7380 M8X20

4PZ

DIN 6923 M8

4PZ

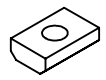


ISO 7380 M8X16

COD.DDDCU000037

ISO 7380 M8X16

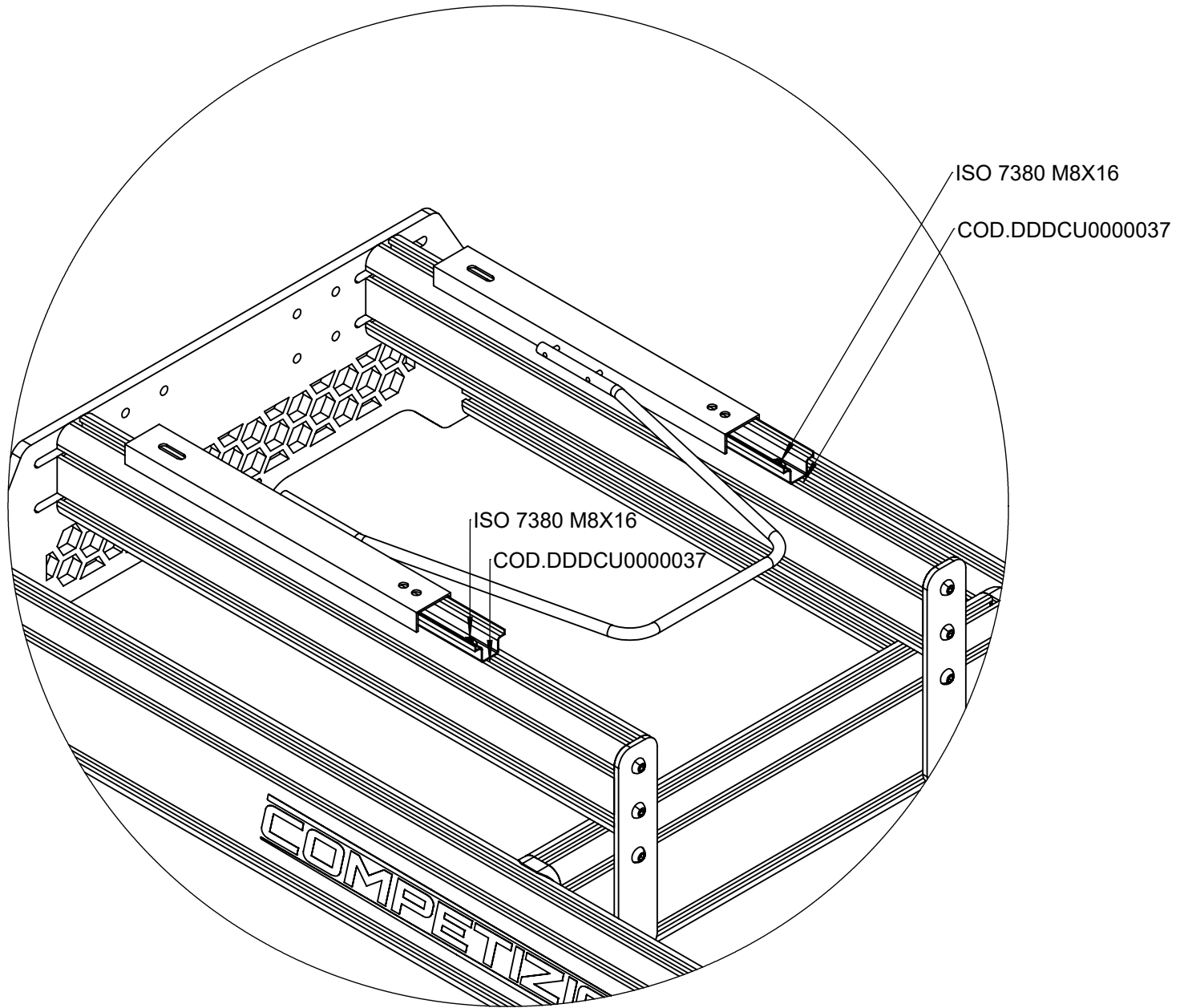
COD.DDDCU000037



2X
COD.DDDCU000037



2X
ISO 7380 M8X16



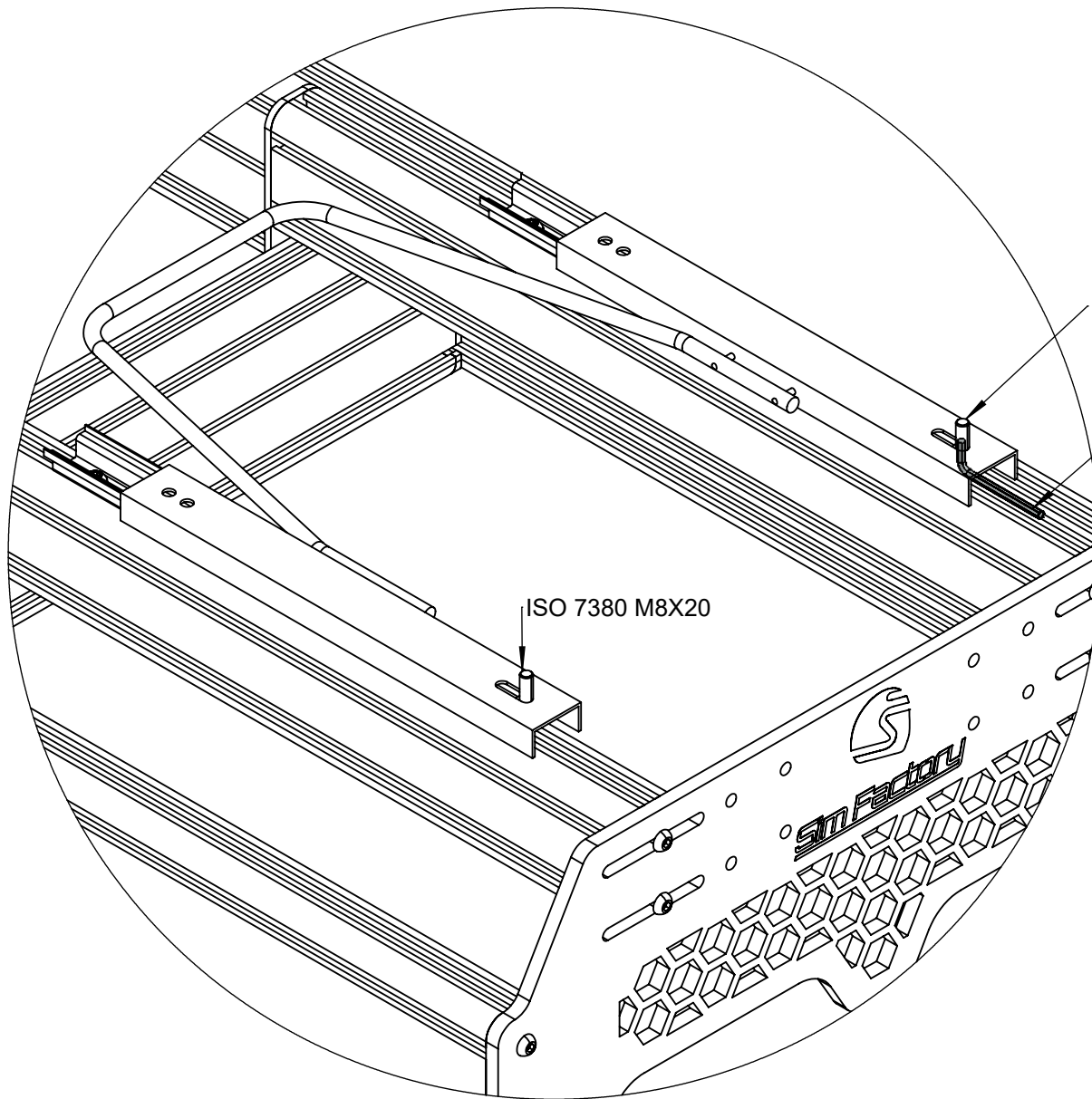
2X

ISO 7380 M8X16



2X

COD.DDDCU0000037



ISO 7380 M8X20

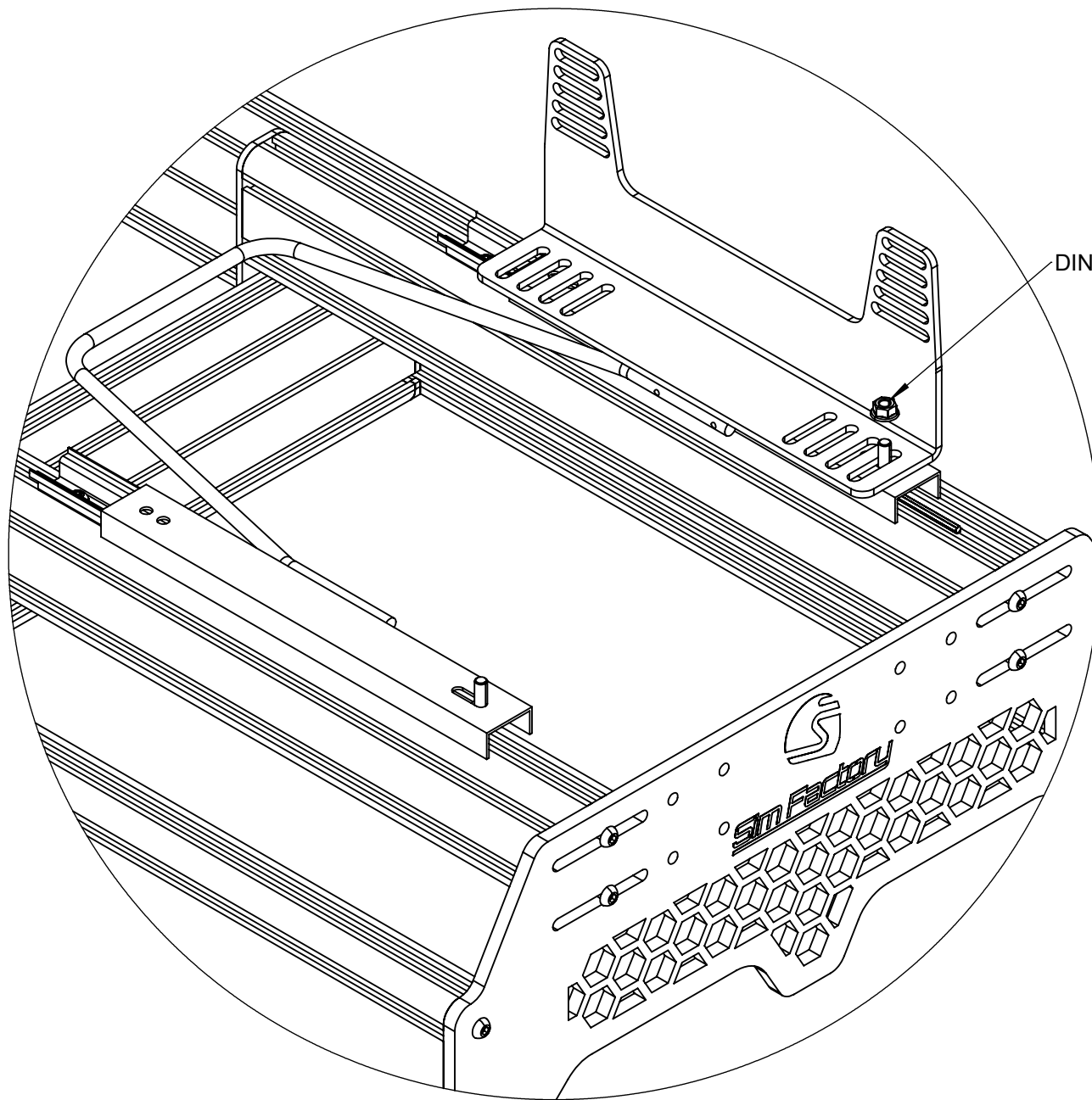
ITA- Usate la chiave esagonale da 5
per tenere ferma la vite M8x20

ENG- Use the 5mm hex wrench
to hold the M8x20 screw in place

ISO 7380 M8X20



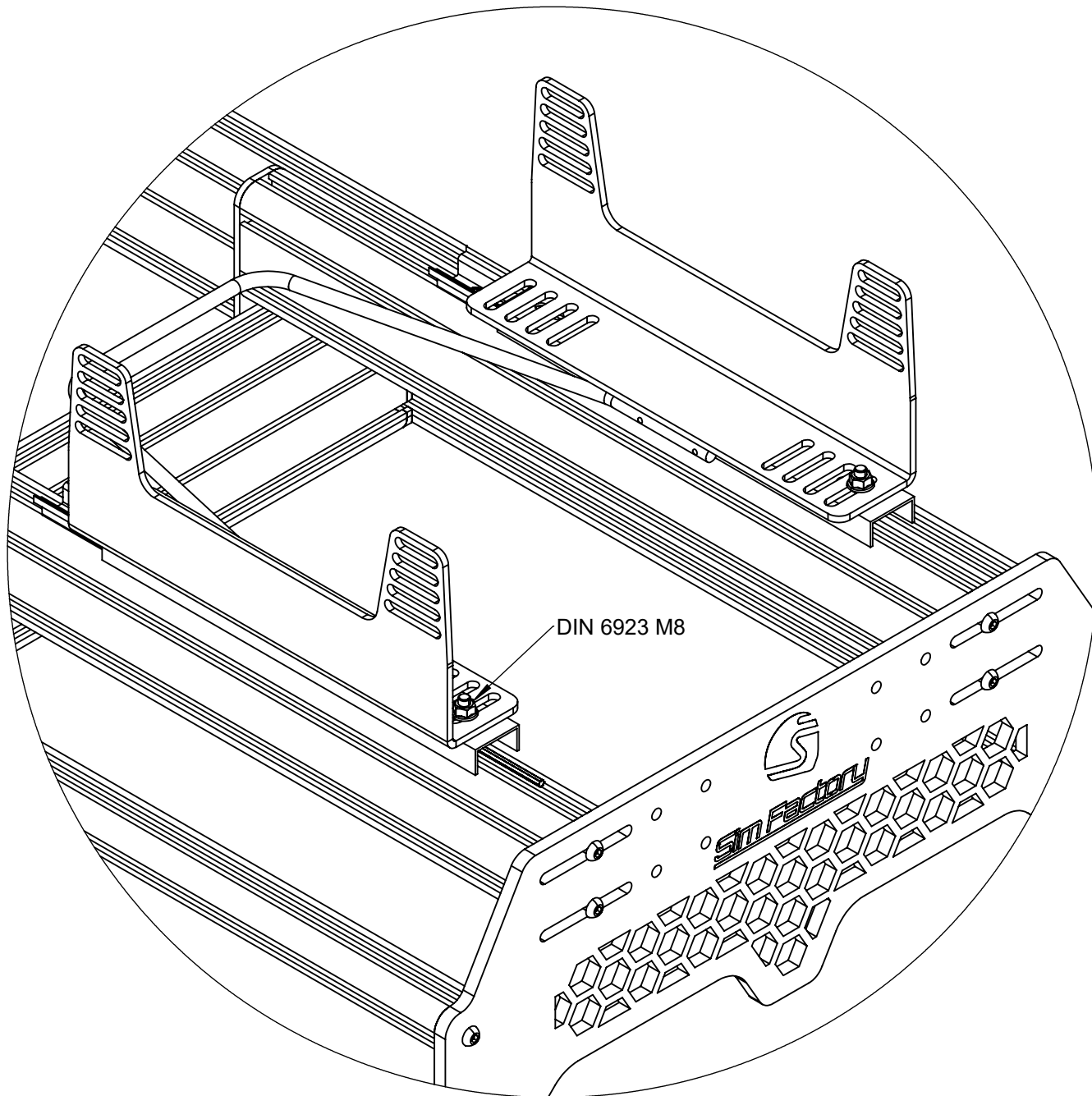
2X
ISO 7380 M8X20



DIN 6923 M8



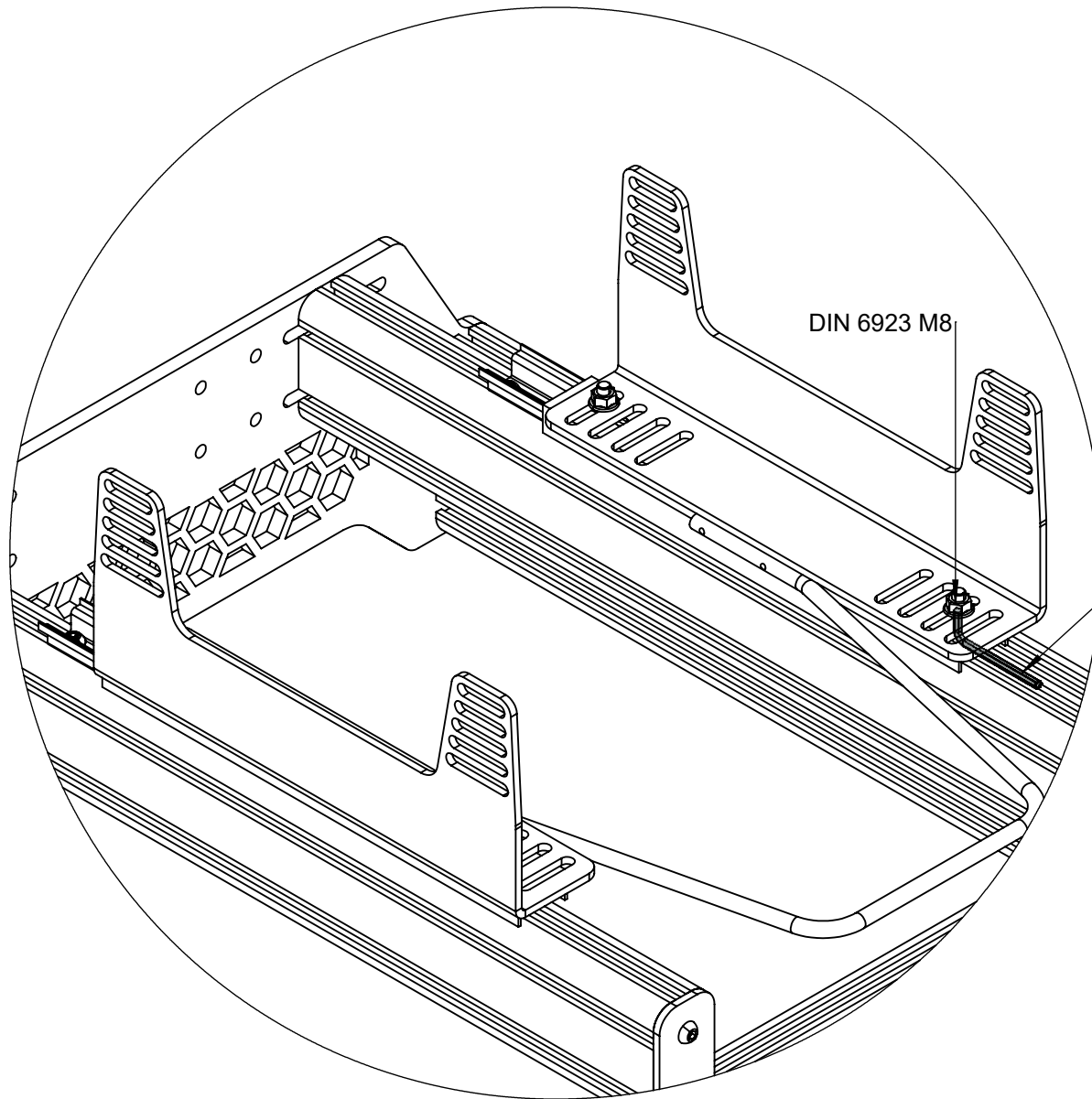
1X
DIN 6923 M8



DIN 6923 M8



1X
DIN 6923 M8



DIN 6923 M8

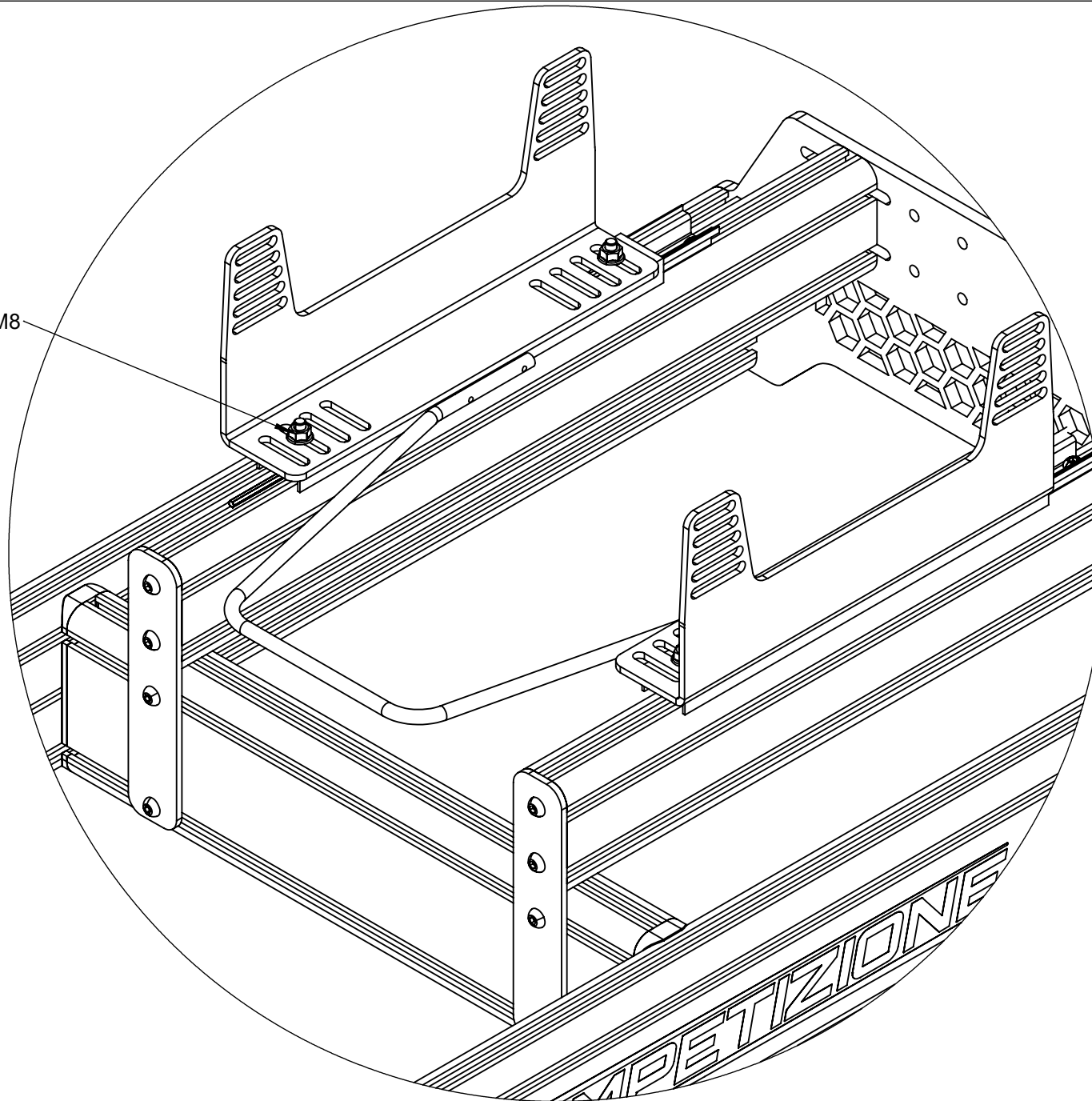
ITA- Usate la chiave esagonale da 5
per tenere ferma la vite M8x20

ENG- Use the 5mm hex wrench
to hold the M8x20 screw in place



1X
DIN 6923 M8

DIN 6923 M8



1X
DIN 6923 M8

